

State of Wyoming Corner Record

(In compliance with the *CORNER PERPETUATION AND FILING ACT*, Wyoming Statutes, 1997 Section 33-29-140 et. seq., and the Rules and Regulations of the Board of Professional Engineers and Professional Land Surveyors)

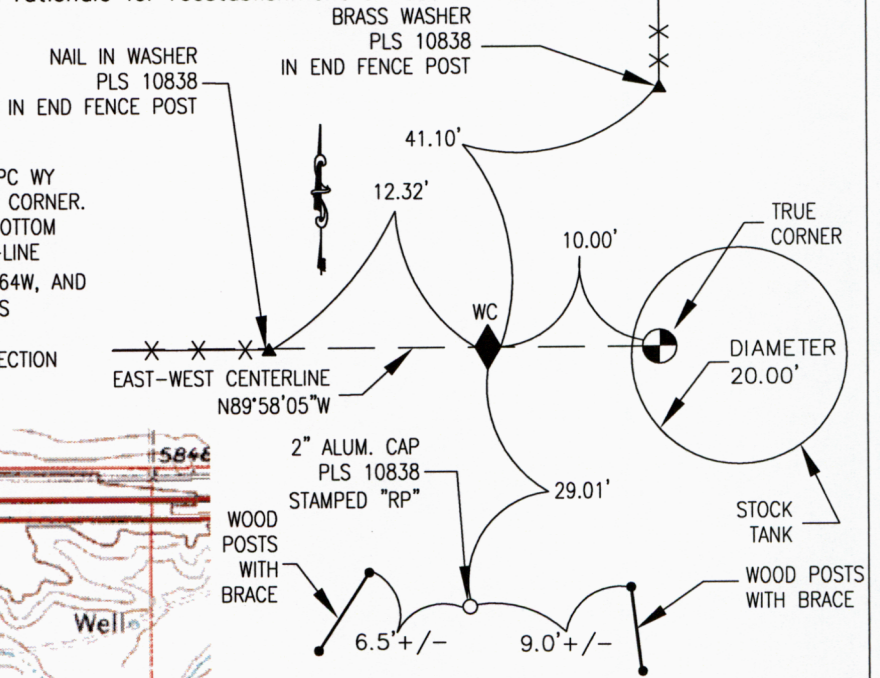
Reverse side of this form may be used if more space is needed.

Record of original survey and citation of source of historical information (if corner is lost or obliterated). Description of corner monumentation evidence found and/or monument and accessories established to perpetuate the location of this corner. Sketch of relative location of monument, accessories, and reference points with course and distance to adjacent corner(s) (if determined in this survey). Method and rationale for reestablishment of lost or obliterated corner.

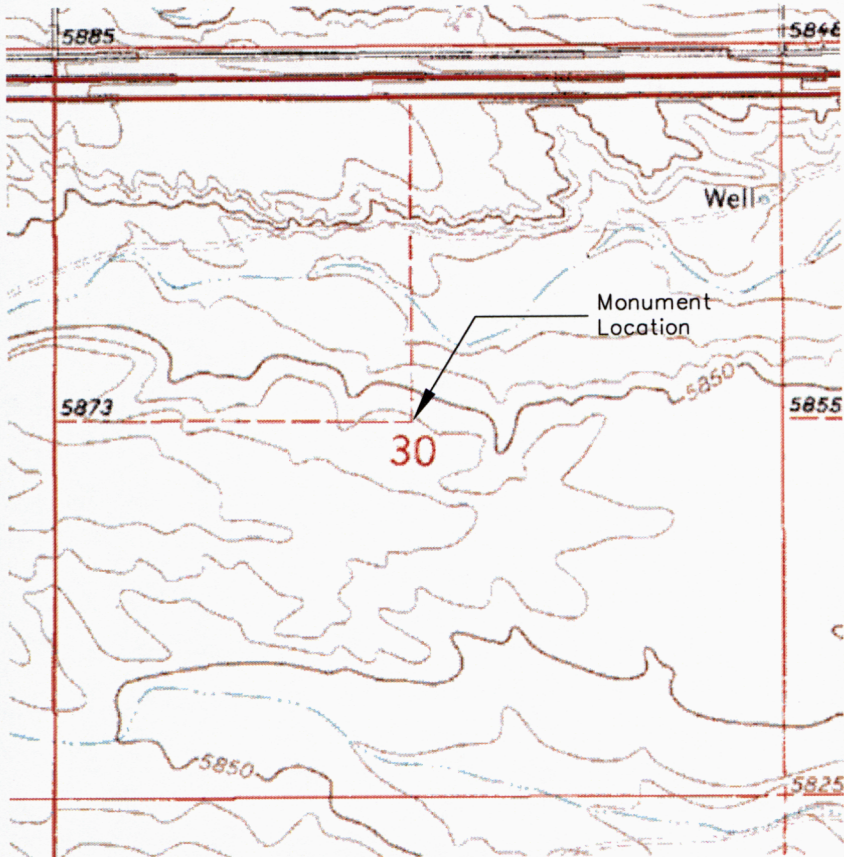
FOUND: NOTHING

TIES: S89° 58' 05"E, 2626.51' TO E ¼ 30
S00° 12' 21"E, 2630.88' TO S ¼ 30

SET: A 3/4" ALUM. CAP ON A 3/4" X 30" REBAR, STAMPED AVI PC WY PLS. NO. 10838, MARKED APPROPRIATELY AS A WITNESS CORNER. SINCE THE TRUE CORNER FALLS IN THE CONCRETE AT BOTTOM OF THE STOCK TANK, THE WITNESS CORNER IS SET ON-LINE BETWEEN THE WEST ¼ CORNER OF SECTION 30, T14N, R64W, AND THE TRUE CORNER'S POSITION, WITH THE TRUE CORNER'S POSITION ESTABLISHED AS THE INTERSECTION OF THE NORTH-SOUTH AND EAST-WEST CENTERLINES OF SAID SECTION 30. SET REFERENCE POINTS AS SHOWN.



Location Sketch



Monument location



Monument Inscription

Date of Field Work: 6/29/07

Office Reference: 2807

Cross Index Plat

	1	2	3	4	5	6	7	8	9	10	11	12	13	14	15	16	17	18	19	20	21	22	23	24	25		
A																											A
B		6	5	4	3	2	1																				B
C																											C
D																											D
E																											E
F																											F
G		7	8	9	10	11	12																				G
H																											H
J																											J
K																											K
L		18	17	16	15	14	13																				L
M																											M
N																											N
O																											O
P		19	20	21	22	23	24																				P
Q																											Q
R																											R
S																											S
T			29	28	27	26	25																				T
U																											U
V																											V
W																											W
X		31	32	33	34	35	36																				X
Y																											Y
Z																											Z
	1	2	3	4	5	6	7	8	9	10	11	12	13	14	15	16	17	18	19	20	21	22	23	24	25		

Firm/Agency, Address

AVI P.C.
2035 WESTLAND RD.
CHEYENNE, WY. 82001

Telephone Number: 307-637-6017

This corner record was prepared by me or under my direction and supervision.

SEAL & SIGNATURE



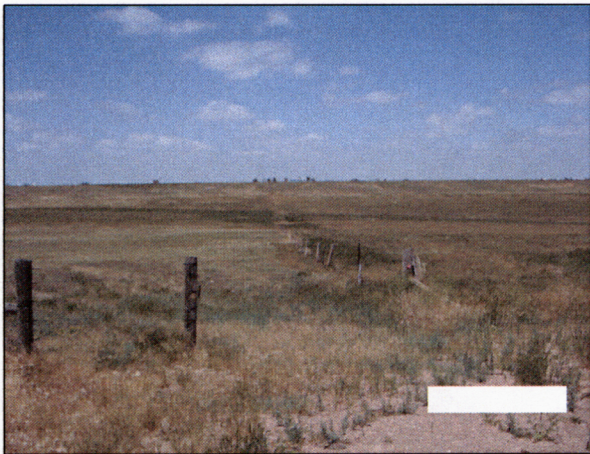
Corner Name Center 1/4 Corner Section 30, T 14 N, R 64 W, 6th P.M.

Cross-Index No.: T-3

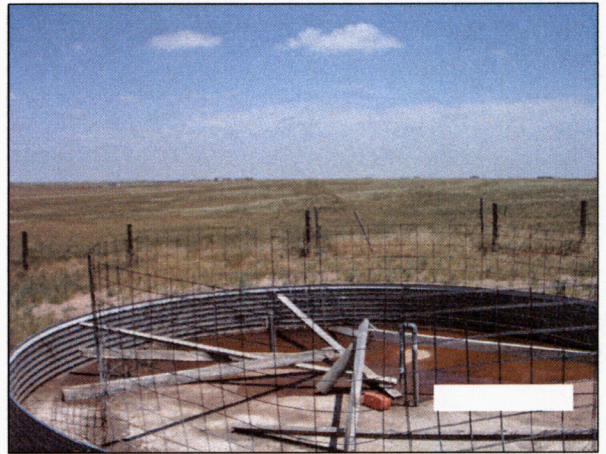
County: LARAMIE Wyoming

SBRPEPLS/PLSW: March 1994; PLSW January 1998

RECORDED 10/31/2007 AT 9:15 AM REC# 466872 X# 2031 PG# 1068
 DEBRA K. LATHROP, CLERK OF LARAMIE COUNTY, WY PAGE 1 OF 2



View North



View East

RECORDED 10/31/2007 AT 9:15 AM REC# 486872 JK# 2031 PG# 1069
DEBRA K. LATHROP, CLERK OF LARAMIE COUNTY, WY PAGE 2 OF 2



View South



View West